

## **BOURBON BALCONY HOSPITALITY SUITES**

Bourbon Balcony Hospitality Suites, the VIP seat on Bourbon Street.  
A favorite for groups and hospitality functions located on the second and third floors of the Hotel.



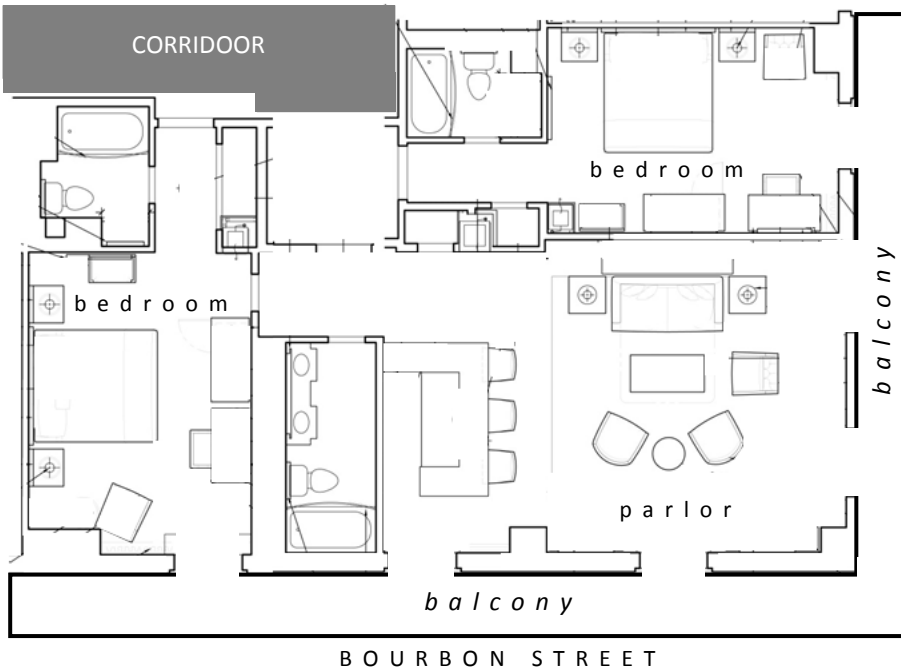
With French doors that open onto spacious, covered wrought iron balconies that face Bourbon, Conti, and Bienville Streets. One to four bedrooms attached to a parlor, these coveted suites have built in bars and space for a reception accommodating up to 175 people – with a bird’s eye view of one of the most storied streets in the world!



For more information, please contact:  
Sales Office 504-553-2205 [rsnosales@sonesta.com](mailto:rsnosales@sonesta.com)

Our hospitality professionals look forward to extending a warm welcome to you and your guests!

**Corner Bourbon – Bienville Balcony**



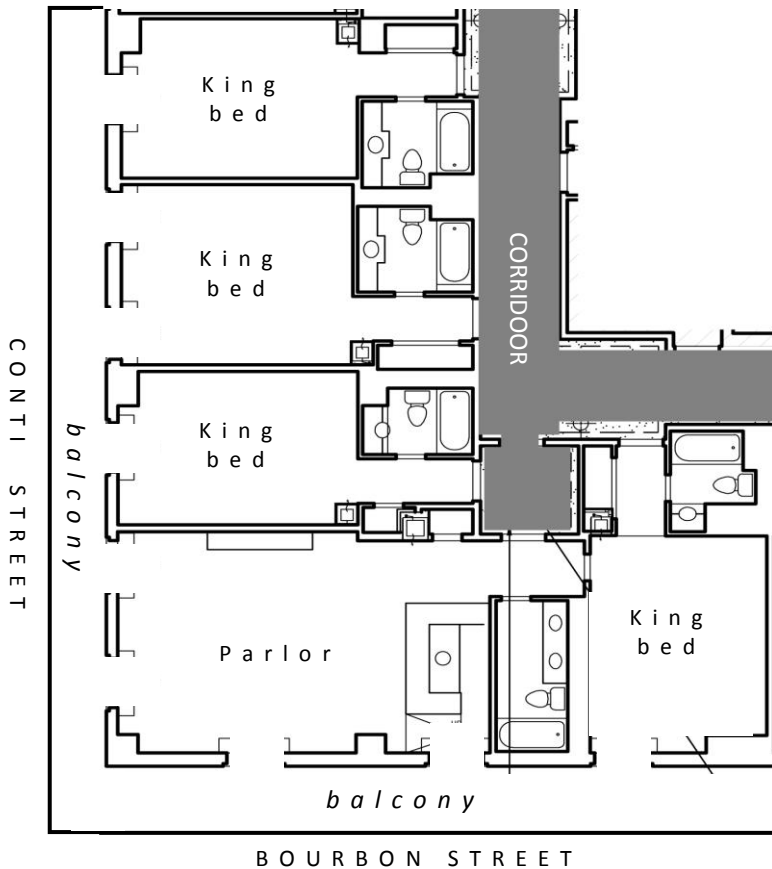
**BIENVILLE CORNER BALCONY**  
1-2 Bedrooms (Shared Balcony)

Parlor Area 25' x 16'6" x 8'  
7.6m x 5.1m x 2.4m  
413 square feet  
38.4 square meters

Bedroom 16' x 12' x 8'  
4.8m x 3.7m x 2.4m  
192 square feet  
17.8 square meters

Capacity 100

**Corner Bourbon – Conti Balcony**



**CONTI CORNER BALCONY**  
1-4 Bedrooms (Shared Balcony)

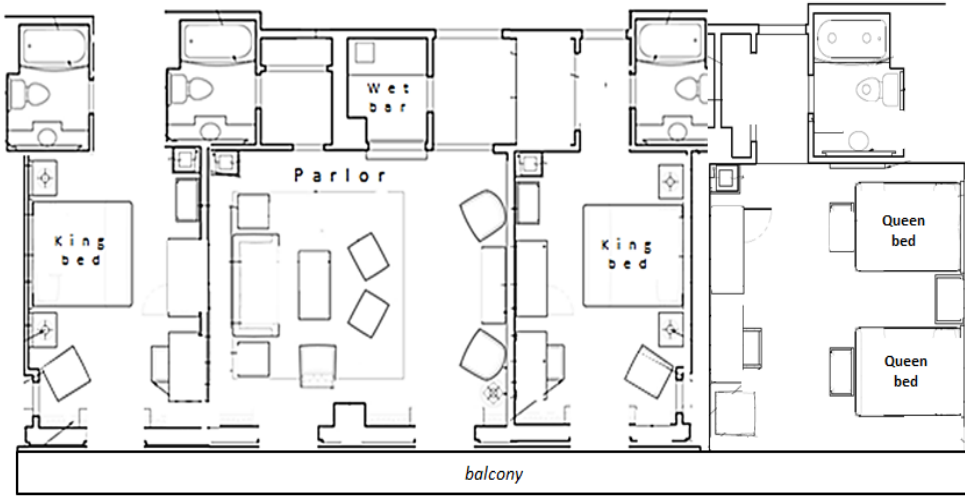
Parlor Area 25' x 16'6" x 8'  
7.6m x 5.1m x 2.4m  
413 square feet  
38.4 square meters

Bedroom 16' x 12' x 8'  
4.8m x 3.7m x 2.4m  
192 square feet  
17.8 square meters

Capacity 175



**Center Bourbon Balcony**



BOURBON STREET

**CENTER  
BOURBON  
BALCONY**

**1-3 Bedrooms (Shared Balcony)**

Parlor Area 19' x 16'4" x 8'  
5.7m x 4.9m x 2.4m  
310 square feet  
28.8 square meters

Bedroom 16' x 12' x 8'  
4.8m x 3.7m x 2.4m  
192 square feet  
17.8 square meters

Capacity 150

